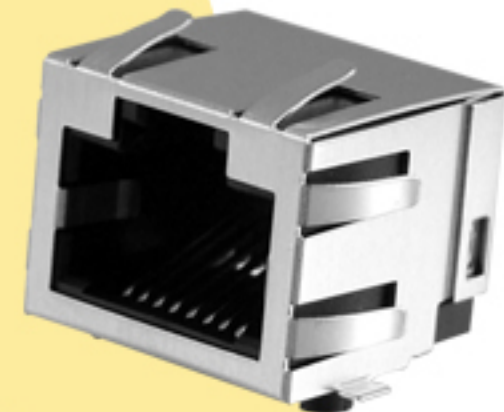
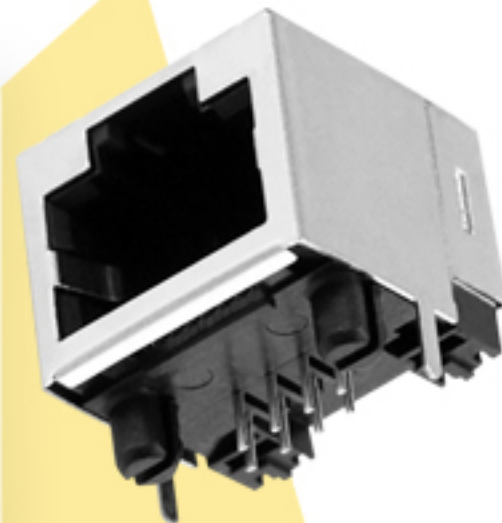




Kycon adds more options to their Right Angle Modular Jack offerings by expanding the GWX series.

- Low Profile design suitable for PC Add-on
- Nonshielded and Fully Shielded options
- Tab up design for easy insertion and removal of mating plug
- Through Hole and Surface Mount Options
- SMT parts available in tape and reel
- Cat5 when CAT5 cable is used



For more information please visit our website at www.kycon.com, or send us an inquiry at sales@kycon.com