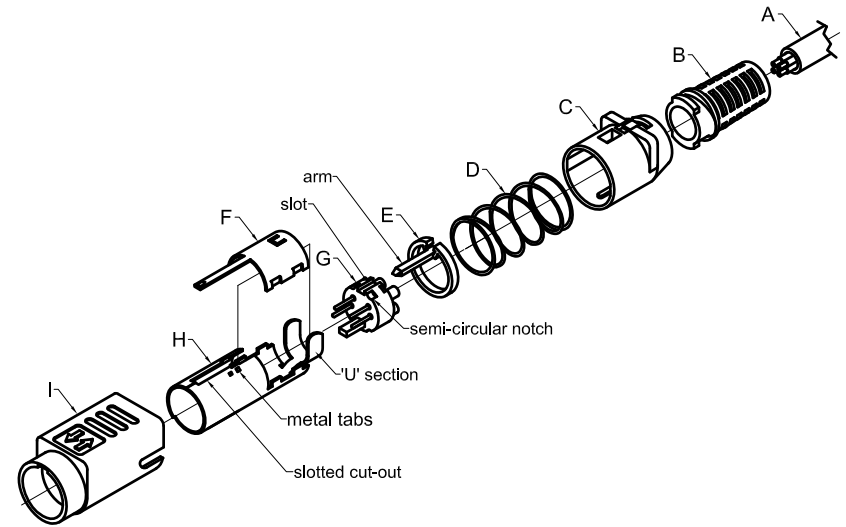


Assembly Instructions

- 1) Attach *Strain Relief* (B) to *Rear Housing* (C).
- 2) Pass *Cable* (A) through *Strain Relief* (B)/*Rear Housing* (C) assembly, *Coil Spring* (D), and *Plastic Guide* (E).
- 3) Solder cable wires to solder cups on *Pin Block* (G).
- 4) Properly align *Pin Block* (G) with *Lower Body* (H). The slotted section on the top of the *Pin Block* (G) must line up with the slotted cut-out on the *Lower Body* (H) and the 4 semi-circular notches around the perimeter of the *Pin Mold* (G) must line up with the 4 metal tabs inside the *Lower Body* (H).
- 5) Push *Pin Block* (G) forward into the *Lower Body* (H) until it locks into place.
- 6) Crimp 'U' section of *Lower Body* (H) onto *Cable* (A).
- 7) Fit *Plastic Guide* (E) into *Lower Body* (H) by placing plastic arm into the appropriate slot on the top of the metal body.
- 8) Attach *Upper Body* (F) onto *Lower Body* (H). Be sure to align all tabs and slots to securely install cover.
- 9) Push *Coil Spring* (D) onto the *Upper Body* (F)/*Lower Body* (H) assembly. This will help to hold the assembly together.
- 10) Push *Strain Relief* (B)/*Rear Housing* (C) assembly onto the *Upper Body* (F)/*Lower Body* (H) assembly. The two assemblies must be properly aligned as shown in the drawing. Be sure to check that the *Coil Spring* (D) remains in place and does not go underneath either the *Rear Housing* (C) or the *Plastic Guide* (E) or twists during assembly. A significant amount of force may be necessary to lock the two assemblies together.
- 11) Press metal tab located on *Upper Body* (F) into gap in *Rear Housing* (C).
- 12) Check to make sure that the *Strain Relief* (B)/*Rear Housing* (C) assembly is securely locked into place over the *Upper Body* (F)/*Lower Body* (H) assembly. The two assemblies should not be able to be pulled apart.
- 13) Properly align the new assembly with the *Forward Housing* (I) as shown in the drawing. Push assembly (twisting *Rear Housing* "C" part) into *Forward Housing* (I) until it locks properly into place. The entire plug assembly is now complete.



Parts List

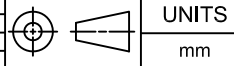
- A - Customer Cable
- B - Strain Relief
- C - Rear Housing
- D - Coil Spring
- E - Plastic Guide
- F - Upper Body
- G - Pin Block
- H - Lower Body
- I - Forward Housing

RoHS COMPLIANT
EU Directive 2002/95/EC

REV.	DATE	DESCRIPTION	REV. BY	CHK. BY	DRAWN BY	DATE
A1	09/21/05	New Drawing	H. MA	C. Furumasu		
A2	11/29/06	ECO #06-051	R. Aguirre	H. MA	H. MA	09/21/05
A3	04/30/14	ECO #14-018	W. Cook	H. MA		

KMDLAX Series Assembly

KMDLAX Series Assembly
Parts List & Instructions



UNITS
mm